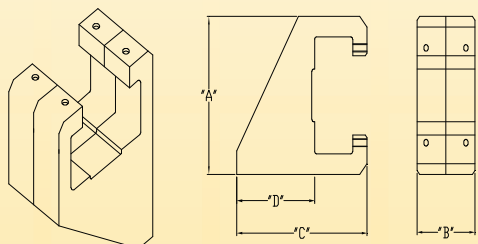




Equipamentos Hidráulicos de Alta Pressão



BRAÇO DE REAÇÃO OPCIONAL

MODELO	"A"	"B"	"C"	"D"
FTM-050	3.75"	1.62"	4.50"	2.68"
FTM-075-4-1	4.75"	2.38"	5.25"	2.87"
FTM-075-6-1	5.00"	2.62"	6.25"	3.87"

LINK MULTIPLICADOR DE TORQUE SÉRIE MULTIPLIC

LINK MULTIPLICADOR DE TORQUE - SÉRIE MULTIPLIC - 1/2" - Relação 4:1

Entrada máxima 340 Nm / Saída Máxima 1.360 Nm

PART NO.	HEX	"A"	"B"	"C"	"D"	"E"	"F"
FTM-050-4-1-087-S	7/8"	.600"	.662"	5.96"	2.75"	8.77"	1.25"
FTM-050-4-1-106-S	1-1/16"	.437"	.500"	5.96"	2.75"	8.77"	1.25"
FTM-050-4-1-125-S	1-1/4"	.437"	.500"	5.96"	2.75"	8.88"	1.25"
FTM-050-4-1-143-S	1-7/16"	.437"	.500"	5.96"	2.75"	8.99"	1.25"
FTM-050-4-1-162-S	1-5/8"	.437"	.500"	5.96"	2.75"	9.09"	1.25"
FTM-050-4-1-181-S	1-13/16"	.437"	.500"	5.96"	2.75"	9.20"	1.25"
FTM-050-4-1-200-S	2"	.437"	.500"	5.96"	2.75"	9.31"	1.25"
FTM-050-4-1-218-S	2-3/16"	.437"	.500"	5.96"	2.75"	9.42"	1.25"
FTM-050-4-1-237-S	2-3/8"	.437"	.500"	5.96"	2.75"	9.53"	1.25"

LINK MULTIPLICADOR DE TORQUE - SÉRIE MULTIPLIC - 3/4" - Relação 4:1

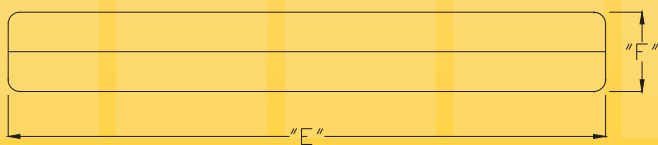
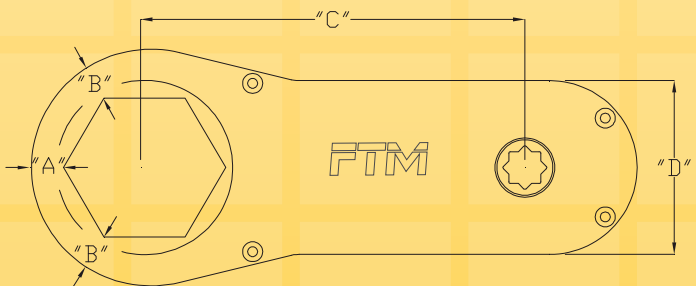
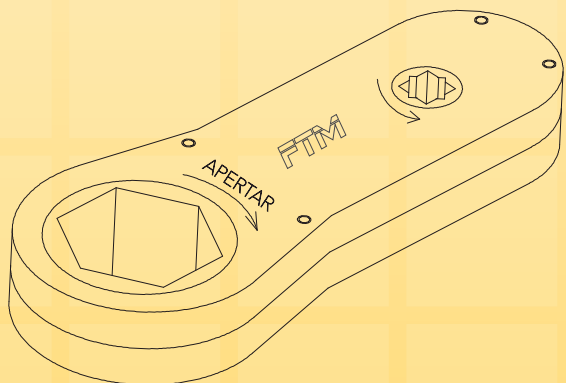
Entrada máxima 600 Nm / Saída Máxima 2.400 Nm

PART NO.	HEX	"A"	"B"	"C"	"D"	"E"	"F"
FTM-075-4-1-087-S	7/8"	.842"	.936"	8.34"	3.75"	12.17"	1.75"
FTM-075-4-1-106-S	1-1/16"	.752"	.846"	8.34"	3.75"	12.17"	1.75"
FTM-075-4-1-125-S	1-1/4"	.652"	.746"	8.34"	3.75"	12.17"	1.75"
FTM-075-4-1-143-S	1-7/16"	.562"	.656"	8.34"	3.75"	12.17"	1.75"
FTM-075-4-1-162-S	1-5/8"	.562"	.656"	8.34"	3.75"	12.28"	1.75"
FTM-075-4-1-181-S	1-13/16"	.562"	.656"	8.34"	3.75"	12.38"	1.75"
FTM-075-4-1-200-S	2"	.562"	.656"	8.34"	3.75"	12.49"	1.75"
FTM-075-4-1-218-S	2-3/16"	.562"	.656"	8.34"	3.75"	12.60"	1.75"
FTM-075-4-1-237-S *	2-3/8"	.562"	.656"	8.34"	3.75"	14.27"	1.75"
FTM-075-4-1-256-S	2-9/16"	.562"	.656"	8.34"	3.75"	12.82"	1.75"
FTM-075-4-1-275-S	2-3/4"	.562"	.656"	8.34"	3.75"	12.92"	1.75"
FTM-075-4-1-293-S	2-15/16"	.562"	.656"	8.34"	3.75"	13.03"	1.75"
FTM-075-4-1-312-S	3-1/8"	.562"	.656"	8.34"	3.75"	13.14"	1.75"

LINK MULTIPLICADOR DE TORQUE - SÉRIE MULTIPLIC - 3/4" - Relação 6:1

Entrada máxima 600 Nm / Saída Máxima 3.600 Nm

PART NO.	HEX	"A"	"B"	"C"	"D"	"E"	"F"
FTM-075-6-1-125-S	1-1/4"	.759"	1.04"	10.48"	4"	15.02"	1.75"
FTM-075-6-1-143-S	1-7/16"	.651"	.946"	10.48"	4"	15.02"	1.75"
FTM-075-6-1-162-S	1-5/8"	.543"	.846"	10.48"	4"	15.02"	1.75"
FTM-075-6-1-181-S	1-13/16"	.434"	.756"	10.48"	4"	15.02"	1.75"
FTM-075-6-1-200-S	2"	.562"	.656"	10.48"	4"	15.26"	1.75"
FTM-075-6-1-218-S	2-3/16"	.562"	.656"	10.48"	4"	15.37"	1.75"
FTM-075-6-1-237-S	2-3/8"	.562"	.656"	10.48"	4"	15.47"	1.75"
FTM-075-6-1-256-S	2-9/16"	.562"	.656"	10.48"	4"	15.58"	1.75"
FTM-075-6-1-275-S	2-3/4"	.562"	.656"	10.48"	4"	15.69"	1.75"
FTM-075-6-1-293-S	2-15/16"	.562"	.656"	10.48"	4"	15.80"	1.75"
FTM-075-6-1-312-S	3-1/8"	.562"	.656"	10.48"	4"	15.91"	1.75"
FTM-075-6-1-350-S	3-1/2"	.562"	.656"	10.48"	4"	16.12"	1.75"
FTM-075-6-1-387-S	3-7/8"	.562"	.656"	10.48"	4"	16.34"	1.75"





Equipamentos Hidráulicos de Alta Pressão

LINK MULTIPLICADOR DE TORQUE - SÉRIE MULTIPLIC - 1/2" - Relação 4:1

Entrada máxima 340 Nm / Saída Máxima 1.360 Nm

PART NO.	HEX	"A"	"B"	"C"	"D"	"E"	"F"
FTM-050-4-1-22MM	22 MM	13.5	15.1	151	70	222	32
FTM-050-4-1-24MM	24 MM	12.0	13.5	151	70	222	32
FTM-050-4-1-27MM	27 MM	11.1	12.7	151	70	222	32
FTM-050-4-1-30MM	30 MM	12.0	13.5	151	70	226	32
FTM-050-4-1-32MM	32 MM	11.1	12.7	151	70	226	32
FTM-050-4-1-36MM	36 MM	11.1	12.7	151	70	228	32
FTM-050-4-1-41MM	41 MM	11.1	12.7	151	70	231	32
FTM-050-4-1-46MM	46 MM	11.1	12.7	151	70	234	32
FTM-050-4-1-50MM	50 MM	11.1	12.7	151	70	236	32
FTM-050-4-1-55MM	55 MM	11.1	12.7	151	70	239	32
FTM-050-4-1-60MM	60 MM	11.1	12.7	151	70	242	32

LINK MULTIPLICADOR DE TORQUE - SÉRIE MULTIPLIC - 3/4" - Relação 4:1

Entrada máxima 815 Nm / Saída Máxima 3.260 Nm

PART NO.	HEX	"A"	"B"	"C"	"D"	"E"	"F"
FTM-075-4-1-22MM	22 MM	21.3	23.6	212	95	309	45
FTM-075-4-1-24MM	24 MM	20.3	22.6	212	95	309	45
FTM-075-4-1-27MM	27MM	18.8	21.1	212	95	309	45
FTM-075-4-1-30MM	30 MM	17.3	19.6	212	95	309	45
FTM-075-4-1-32MM	32 MM	16.3	18.6	212	95	309	45
FTM-075-4-1-36MM	36 MM	14.3	16.6	212	95	309	45
FTM-075-4-1-41MM	41 MM	14.3	16.6	212	95	312	45
FTM-075-4-1-46MM	46 MM	14.3	16.6	212	95	315	45
FTM-075-4-1-50MM	50 MM	14.3	16.6	212	95	317	45
FTM-075-4-1-55MM	55 MM	14.3	16.6	212	95	320	45
FTM-075-4-1-60MM	60 MM	14.3	16.6	212	95	323	45
FTM-075-4-1-65MM	65 MM	14.3	16.6	212	95	325	45
FTM-075-4-1-70MM	70 MM	14.3	16.6	212	95	328	45
FTM-075-4-1-75MM	75 MM	14.3	16.6	212	95	331	45
FTM-075-4-1-80MM	80 MM	14.3	16.6	212	95	334	45

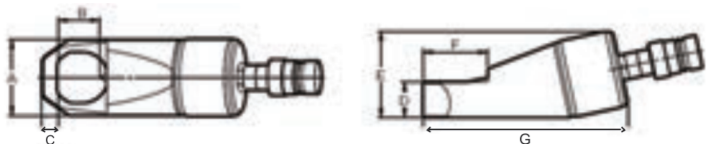


LINK MULTIPLICADOR DE TORQUE - SÉRIE MULTIPLIC - 3/4" - Relação 6:1

Entrada máxima 815 Nm / Saída Máxima 4.890 Nm

PART NO.	HEX	"A"	"B"	"C"	"D"	"E"	"F"
FTM-075-6-1-32MM	32 MM	23.3	25.6	266	102	382	45
FTM-075-6-1-36MM	36 MM	21.3	23.6	266	102	382	45
FTM-075-6-1-41MM	41 MM	18.8	21.1	266	102	382	45
FTM-075-6-1-46MM	46 MM	16.3	18.6	266	102	382	45
FTM-075-6-1-50MM	50 MM	14.3	16.6	266	102	388	45
FTM-075-6-1-55MM	55 MM	14.3	16.6	266	102	390	45
FTM-075-6-1-60MM	60 MM	14.3	16.6	266	102	393	45
FTM-075-6-1-65MM	65 MM	14.3	16.6	266	102	396	45
FTM-075-6-1-70MM	70 MM	14.3	16.6	266	102	399	45
FTM-075-6-1-75MM	75 MM	14.3	16.6	266	102	401	45
FTM-075-6-1-80MM	80 MM	14.3	16.6	266	102	404	45
FTM-075-6-1-90MM	90 MM	14.3	16.6	266	102	410	45
FTM-075-6-1-100MM	100 MM	14.3	16.6	266	102	415	45

Corta Porca



MODELO	Range Parafuso	Range Porca (mm)	Capacidade (toneladas)	Capacidade óleo (cm³)	Principais dimensões			Peso líquido kg	Peso bruto kg
HYNC-1319	M6-M12	13-19	5	15	170	40	48	1.2	2.6
HYNC-1924	M12-M16	19-24	10	20	191	54	62	2.0	3.6
HYNC-2432	M15-M22	24-32	15	60	222	64	72	3.0	5.2
HYNC-3241	M22-M27	32-41	20	80	244	75	88	4.4	7.0
HYNC-4150	M27-M33	41-50	35	155	288	94	105	8.2	13.6
HYNC-5060	M33-M39	50-60	50	240	318	106	128	11.8	18.4
HYNC-5075	M39-M48	60-75	90	492	393	156	181	34.1	42.7

ATENÇÃO - NÃO CORTAR PORCAS EM AÇO COM DUREZA ACIMA DE 44 HRC

Especificações do Modelo	A	B	C	D	E	F	G
HYNC-1319	40.00	22.00	7.00	19.00	50.00	29.00	120.00
HYNC-1924	54.00	30.00	10.00	25.00	62.00	40.00	146.00
HYNC-2432	64.00	39.00	13.00	30.00	76.00	52.00	180.00
HYNC-3241	70.00	49.00	16.00	36.00	87.00	65.00	205.00
HYNC-4150	90.00	55.00	21.10	45.00	108.00	76.00	245.00
HYNC-5060	106.00	64.00	24.00	54.00	125.00	92.00	288.00
HYNC-5075	156.00	83.00	27.00	75.00	184.00	110.00	365.00

MATRIZ (FÁBRICA)

Rua Sete de Julho, 56 - Vila Socorro
04760-070 São Paulo - SP

(11) 5522-6264
(11) 2574-5782
(11) 99416-6042

FILIAL (COMERCIAL)

R. Padre João Álvares, 509 - Vila Renata
07056-000 Guarulhos - SP

(11) 2304-5873 / (11) 2304-7052
(11) 2304-0767 / (11) 2574-5782
(11) 98576-2624